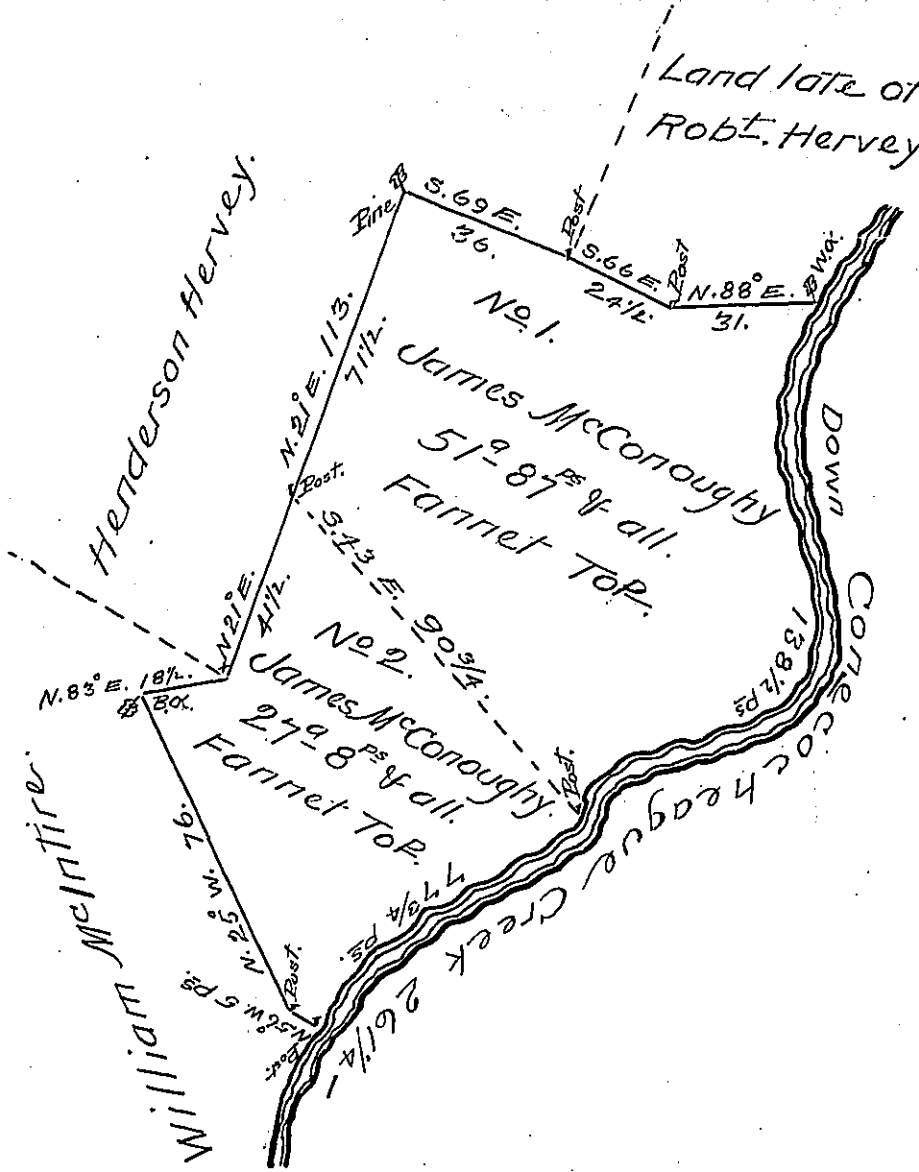


Courses on Creek of No. 1.

S. - 43° - W. 28 1/2 Ps.
 S. - 2 - E. 15.
 S. - 8 - E. 40.
 S - 24 - W. 18.
 S - 45 - W. 21.
 S. 72 - W. 16.
 138 1/2 Ps.

Courses on Creek of No. 2.

S - 67° - W. 46 1/4 Ps.
 S - 31 - W 3 1/2
 77 3/4 Ps.



The above described tract of Land, comprehending Nos. 1 & 2 situate in Fannet Township, Franklin County, No. 1 containing fifty one acres, eighty seven perches, of Land, and allowance of six 7/8 Cent for Roads &c was surveyed by Matthew Henderson Esq. formerly a Deputy Surveyor, on the 8th day of February 1791. In pursuance of a Warrant granted to James McConoughy, bearing date the 19th day of October A. D. 1790.

No. 2 Containing Twenty seven acres, eight perches of Land and all of six 7/8 Cent for Roads &c. was surveyed by Matthew Henderson Esq. formerly a Deputy Surveyor, on the 27th day of March A. D. 1793. In pursuance of a warrant granted to James McConoughy, bearing date the 19th of May 1792. all of which, appears by an Official Draft thereof remaining in my Office, which Draft I have examined and find correct.

Certified this 18th day of June 1804 by

Tho Kirby D.S.

To Samuel Cochran Esq. }
 Surveyor Genl. of Pennsylvania }

IN TESTIMONY that the above is a copy of the original remaining on file in the Department of Internal Affairs of Pennsylvania, made conformably to an Act of Assembly approved the 16th day of February, 1833, I have hereunto set my Hand and caused the Seal of said Department to be affixed at Harrisburg, this fourteenth day of December 1905.

Isaac P. Brown
 Secretary of Internal Affairs.